

State of Wyoming Corner Record

CORNER PERPETUATION AND FILING ACT,
Regulations of the Board of Registration for Professional Engineers and Land Surveyors.)

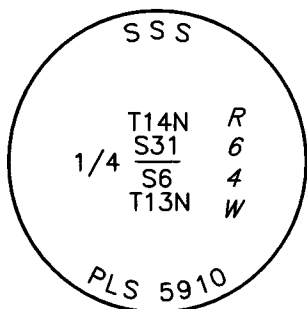
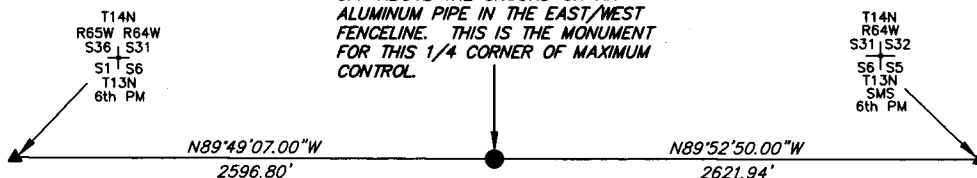
Reverse side of this form may be used if more space is needed.

Record of original survey and citation of source of historic information (if corner is lost or obliterated). Description of corner monumentation evidence found and/or monument and accessories established to perpetuate the location of this corner. Sketch of relative location of monument, accessories, and reference points with course and distance to adjacent corner(s) (if determined in this survey). Method and rationale for reestablishment of lost or obliterated corner.

NOTE:
LINES SHOWN ARE BETWEEN
MONUMENTS AND MAY OR
MAY NOT BE SECTION OR
SECTION SUBDIVISION LINES.

THE MONUMENT IS FOR:
T14N R64W
1/4 S31
S6
T13N
6th PM

FOUND THE MONUMENT FOR THIS 1/4 CORNER OF MAXIMUM CONTROL WHICH IS A 3.25" PRIVATE ALUMINUM CAP MARKED PLS #5910 THAT PROTRUDES 0.4' ABOVE THE GROUND ON AN ALUMINUM PIPE IN THE EAST/WEST FENCELINE. THIS IS THE MONUMENT FOR THIS 1/4 CORNER OF MAXIMUM CONTROL.



CORNER MONUMENT SYMBOLS

- RECORD IS FOR THIS CORNER MONUMENT.
- ▲ A RELATED CORNER OR WC MONUMENT.

↑

SCALE 1"=1000'
(EXCEPT IN TRIVIAL CASES)
BEARINGS ARE RELATED TO WGS 84 WITH GPS OBSERVATIONS
DRAWN BY: SM
P.C. D. SHANKS
COUNTY: LARAMIE



RECP #: 658194
RECORDED 4/6/2015 AT 2:29 PM BK# 2437 PG# 913
Debra K. Lathrop, CLERK OF LARAMIE COUNTY, WY PAGE 1 OF 1

Date of Field Work: 12/27/2013 Office Reference: _____

CROSS INDEX DIAGRAM

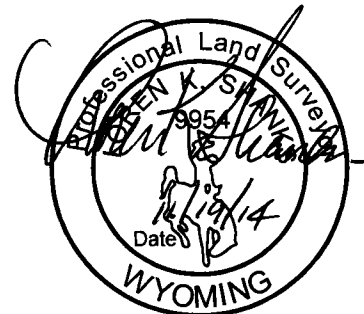
A	1	2	3	4	5	6	7	8	9	10	11	12	13	14	15	16	17	18	19	20	21	22	23	24	25
B																									
C		6		5			4			3			2			1									
D																									
E																									
F																									
G		7		8			9			10			11			12									
H																									
J																									
K																									
L		18		17			16			15			14			13									
M																									
N																									
O																									
P		19		20			21			22			23			24									
Q																									
R																									
S																									
T		30		29			28			27			26			25									
U																									
V																									
W																									
X		31		32			33			34			35			36									
Y																									
Z																									

Firm/Agency, Address

UELS, LLC
85 South 200 East
Vernal, Utah 84078
Telephone Number: 435-789-1017

This corner record was prepared by me or under my direction and supervision.

SEAL & SIGNATURE



1/4 CORNER OF MAXIMUM CONTROL
Corner Name: SOUTH 1/4 CORNER OF SECTION 31 Section: 31 T 14N R 64W ; 6TH P.M. Cross Index No.: Z-3
SBRPEPLS/PLSW: March 1994 (CLCR...SJA)